

# BPS 300i

Bar code positioning system  
for positioning with millimeter  
accuracy over distances  
of up to 10km

*availability* control.



# BAR CODE POSITIONING – SECOND GENERATION

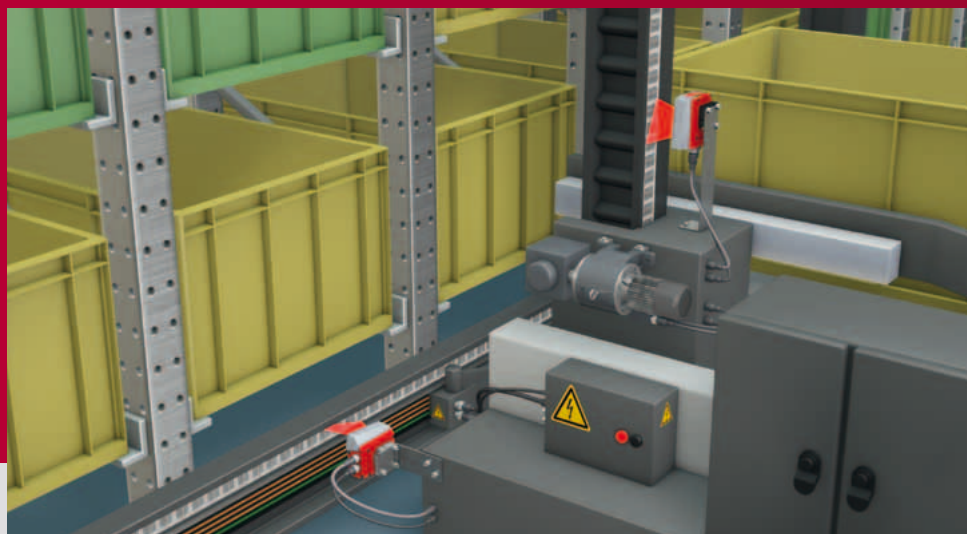
The next generation of the BPS 300i bar code positioning system sets standards in performance and handling.

*availability*control.

BAR CODE POSITIONING  
WAS NEVER THIS GOOD.

Ten years of practical experience has been incorporated in the second generation of our bar code positioning systems. The result is a product that sets standards both in performance characteristics as well as in ease of handling. Mounting and operation are now even simpler, faster and more reliable.





## THE WHOLE IS MORE THAN THE SUM OF ITS PARTS.

Your benefit lies in the combination of the many advantages offered by the BPS 300i systems. What they all have in common is focus on simple usability with maximum possible performance reserves for fault-free function of the devices. Highly resistant bar code tape, available in lengths of up to 10 km, facilitates precise and continuous position determination, even over extremely long paths.

### **think**modular.

Find the function range that is optimum for your application and pay only for what you really need.

- **Various connection hoods**  
(terminals, M12, cables) for optimum integration in your control.



- **Optional display**  
for visualization and diagnostics.

- **Optional optics heating**  
for low-temperature applications.

### **power**reserve.

Thanks to a working range of  $\pm 60$  mm, the systems, with their laser technology, are very tolerant of mechanical fluctuations. They thereby offer reliable position detection with the largest performance reserve in every environment.

### **availability**control.

With the integrated availabilitycontrol functionality, the device constantly reports its performance reserves, thereby indicating, e.g., soiling in good time. As a result, soiling-related failures can be reliably avoided, since the system can be cleaned in good time.

### **integrated**connectivity.

The integrated fieldbus permits complete configuration of the devices directly via the control. You thereby save time during installation and money by avoiding otherwise needed connector units. Should device replacement be necessary, no configuration needs to be performed, since the information is located in the control.

### **easy**handling.

The sophisticated fastening concept enables simple and robust mounting of the devices. This saves time and prevents difficulties during commissioning. Should replacement be necessary, the devices can be exchanged position-neutral, i.e., without realigning.

BTU 0300 M-W





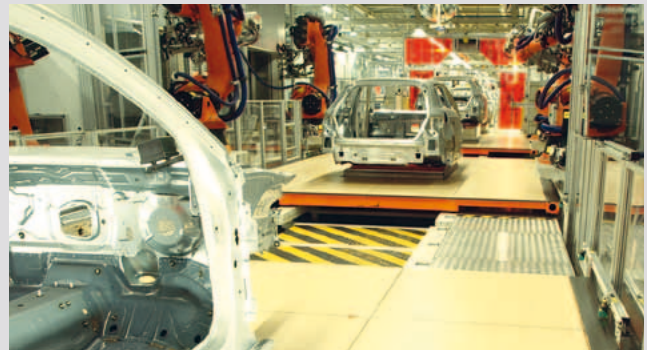
# ALWAYS KNOW WHERE YOU'RE STANDING

The BPS 300i in use and in detail.

Specifications	BPS 300i
Working range	50–170 mm
Reproducibility	± 0.15 mm (at 3 sigma)
Measurement value output	1 ms (1,000 measurement values / s)
Integration time	8 ms
Max. traverse rate	10 m/sec
Integrated interfaces	PROFINET
Supply voltage	10–30 V DC
Ambient temperature (operation) without heating with heating	-5 – +50 °C -35 – +50 °C



For positioning high-bay storage devices and lifting units, e.g., in conveyor and storage systems



For position determination of skid systems and side-track-ing skates, e.g., in the automotive industry



For position determination of trolley lines, e.g., in the automotive industry



For position determination of gantry cranes in intralogistics

# CONFIGURE - PARAMETERIZE - DIAGNOSE

The integrated fieldbus makes configuration quick and easy.



integrated connectivity.



PROFIBUS and SSI  
available beginning November 2014



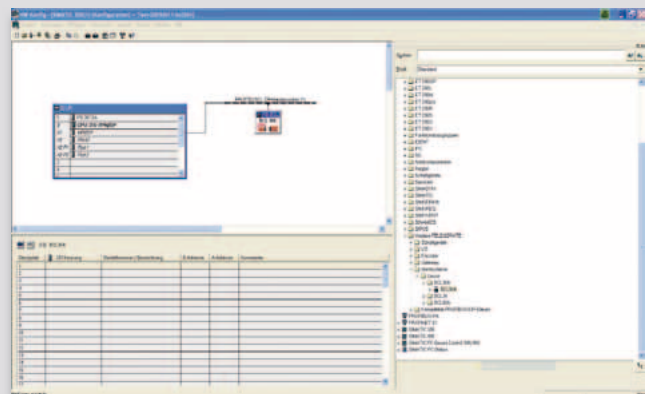
THE LEUZE ELECTRONIC  
webCONFIG TOOL.

With the integrated webConfig tool, an operating-system independent, web-technology based, multi-language user interface is available for configuring the device. The individual parameters are presented in an easy-to-understand, graphic form.



THE BPS 300i IN THE PROFINET WORLD.

With the integrated PROFINET, it is possible to configure the BPS 300i via the module structure contained in the GSD/GSDML file directly via the HW Config. In doing so, the parameters that are set are stored in the control and, should a device need to be replaced, automatically transferred to the new device.



# KILOMETERS LONG AND ACCURATE TO THE MILLIMETER

It's the bar code tape that makes a positioning system perfect.

## HANDLES ALMOST EVERYTHING UP TO 10,000 M.

The second fundamental element of a Leuze electronic bar code positioning system is the bar code tape. The photosetting technique is used to print a unique bar code at regular intervals on a self-adhesive and highly flexible plastic tape. This technology makes the tape UV resistant, extremely resilient and mechanically durable. The position value is also printed in "plain text" to simplify handling. This tape, which

may be up to 10,000 m in length, can be simply affixed to the travel path and conforms well to both horizontal as well as vertical curves. If the tape should nevertheless be damaged, an appropriate repair kit can be downloaded from the Internet. By integrating so-called mark labels in the bar code tape, the bar code reader can also control specific functions such as velocity changes or conveyor movements.

Technical data	BCB
Max. length	10,000 m
Temperature range	-40 – +120 °C
Print method	Photosetting
Adhesive	Acrylic glue
Tape height	47 mm
Spacing between bar codes	40 mm / 30 mm
Environmental conditions	Scratch and wipe resistant, UV-light resistant, moisture and chemical resistant





# OUR PROMISE TO YOU

## SMARTER **PRODUCT USABILITY**

With regard to our product developments, we systematically place emphasis on the especially good usability of all devices. To this end, simple mounting and alignment are taken into account – just as the uncomplicated integrability of the sensors in existing fieldbus systems and easy configuration, e.g. via a web browser, are.

## SMARTER **APPLICATION KNOW-HOW**

Whoever can do it all, can do nothing right. Which is why we concentrate on selected target sectors and applications. There, we are specialists and know all aspects inside out. For this purpose, we optimize our solutions and offer a comprehensive product range that makes it possible for our customers to obtain the absolute best solutions from a single source.

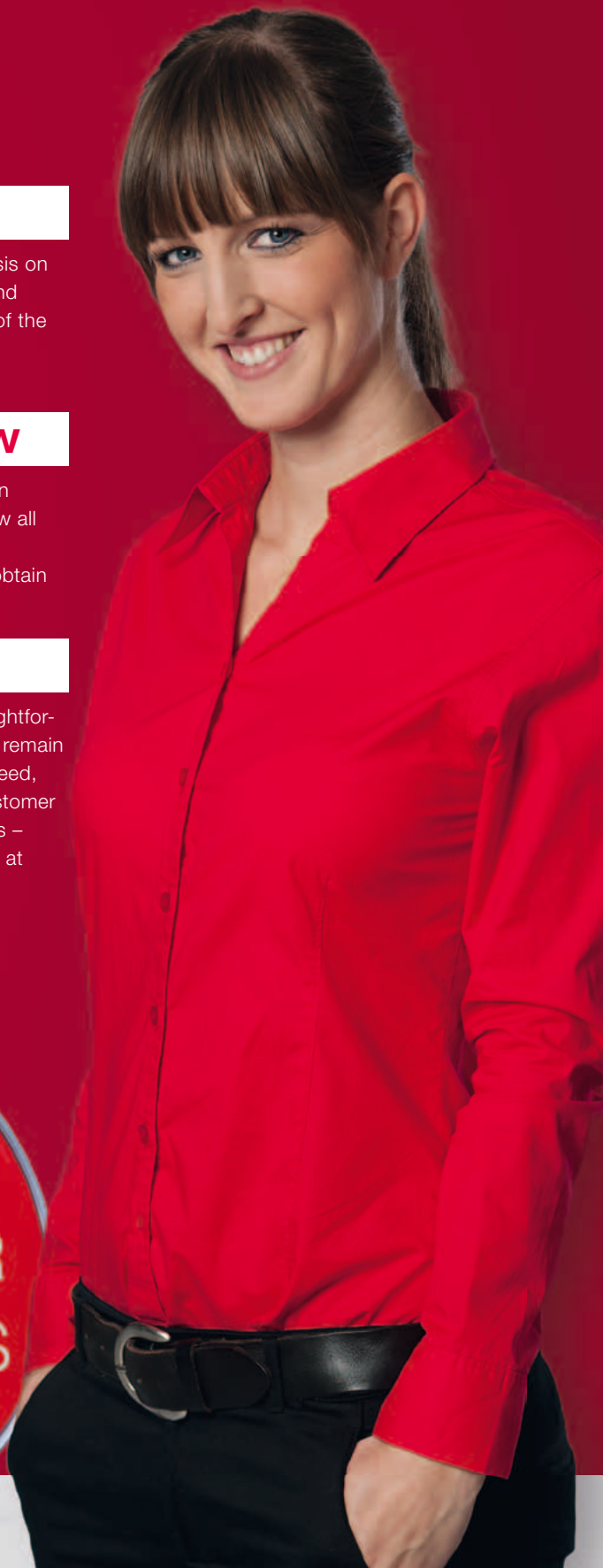
## SMARTER **CUSTOMER SERVICE**

The technical and personal closeness to our customers, and a skilled, straightforward handling of queries and problems, are among our strengths – and will remain so. Consequently, we will continue to expand our service offerings and, indeed, also forge ahead in new directions to persistently redefine the utmost in customer service. Whether on the phone, in the Internet or on-site with our customers – regardless of when and where the expertise of the sensor people is needed at any time.

Info at: [www.leuze.com](http://www.leuze.com)



Katrin Rieker,  
Employee in the  
Customer Care Center



### **Switching Sensors**

Optical Sensors  
Ultrasonic Sensors  
Fiber Optic Sensors  
Inductive Switches  
Forked Sensors  
Light Curtains  
Special Sensors

### **Measuring Sensors**

Distance Sensors  
Sensors for Positioning  
3D Sensors  
Light Curtains  
Forked Sensors

### **Products for Safety at Work**

Optoelectronic Safety Sensors  
Safe Locking Devices and Switches  
Safe Control Components  
Machine Safety Services

### **Identification**

Bar Code Identification  
2D-Code Identification  
RF Identification

### **Data Transmission/ Control Components**

MA Modular Interfacing Units  
Data Transmission  
Safe Control Components

### **Industrial Image Processing**

Light-Section Sensors  
Smart Camera

Leuze electronic GmbH + Co. KG  
In der Braike 1  
D-73277 Owen / Germany  
Phone +49 7021 573-0  
Fax +49 7021 573-199  
info@leuze.de  
www.leuze.com